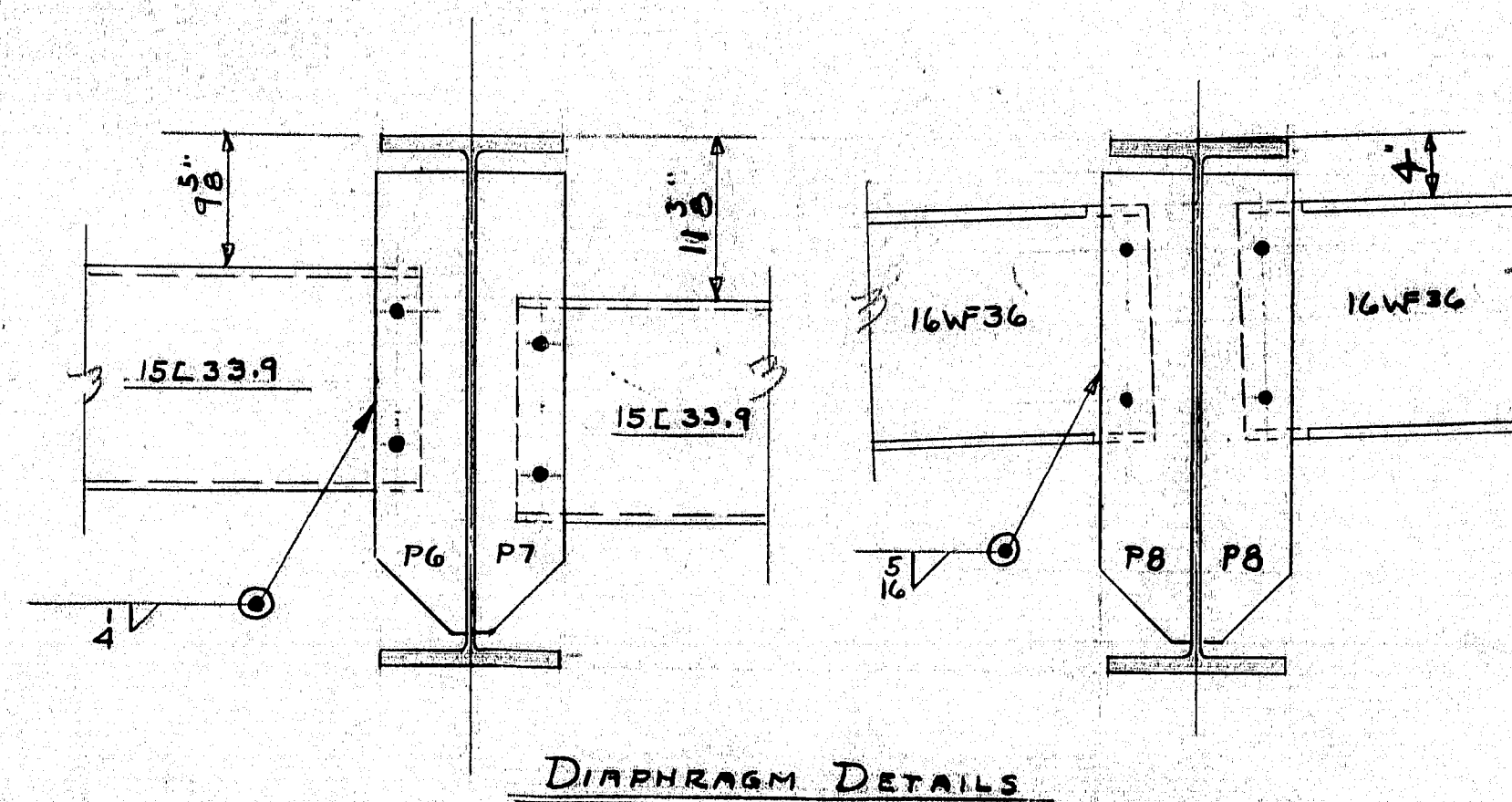
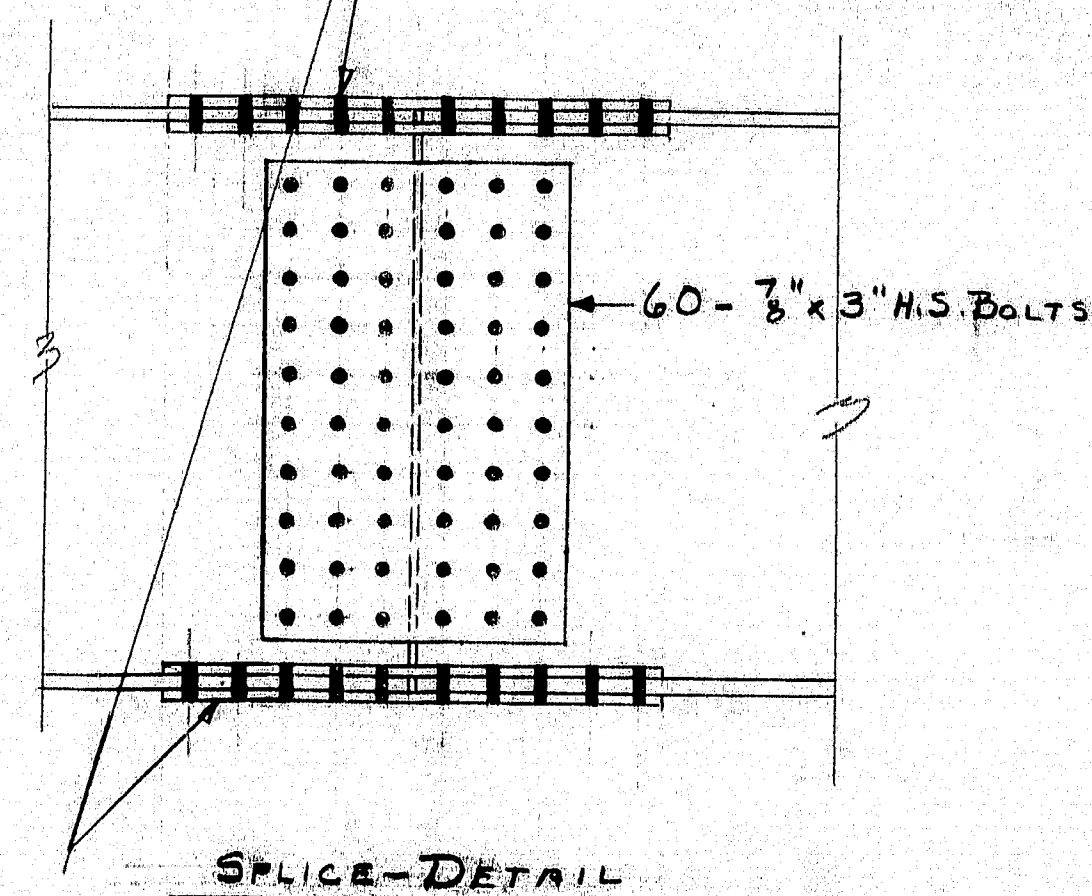


48 - 3/8 x 3 1/2" H.S. BOLTS - FOR SPlice #1
 40 - 3/8 x 3 1/2" H.S. BOLTS - FOR SPlice #3
 40 - 3/8 x 3 1/2" H.S. BOLTS - FOR SPlice #2



FRAMING PLAN

NOTES:
 STEEL FOR STRINGERS, COVERS & SPlice RS SHALL BE ASTM-A36
 ALL OTHER STEEL TO BE ASTM-A36 OR A7

SPlice BOLTS SHALL BE ASTM-A325-3/4" HEX. HEAVY STRUCT. BOLTS
 WITH HEAVY SEMI-FINISHED HEX. NUTS & ONE HARDENED WASHER

HOLES FOR SPlice BOLTS ARE TO BE FREE FROM BURRS. THERE SHALL
 BE NO PAINT WITHIN 3" OF SUCH OPEN HOLES. SUB PUNCH OR DRILL
 HOLES TO 11/16", REAM ASSEMBLED PARTS (NO TEMPLATES) TO 1/2", OR
 DRILL FROM SOLID FOR FIELD CONNECTION

MATCHMARK ALL CONNECTING PARTS BEFORE DISASSEMBLING
 & SUPPLY ENGINEER WITH A DIAGRAM OF MATCHMARKS.

SHOP CONNECTIONS:
 FIELD CONNECTIONS:
 HOLES:
 PAINT:

FRAMING PLAN

| PRINT | ISSUE |
|----------|----------------|
| 2 | S.H.C. 6-25-64 |
| 2 | S.H.C. 5-4-64 |
| 3 | CUST 5-4-64 |
| 1 | SHOP 5-4-64 |
| 2 | F.A. 4-22-64 |
| DRAWN | 4-6-64 D.C. |
| REVISION | |
| REVISION | |
| REVISION | |

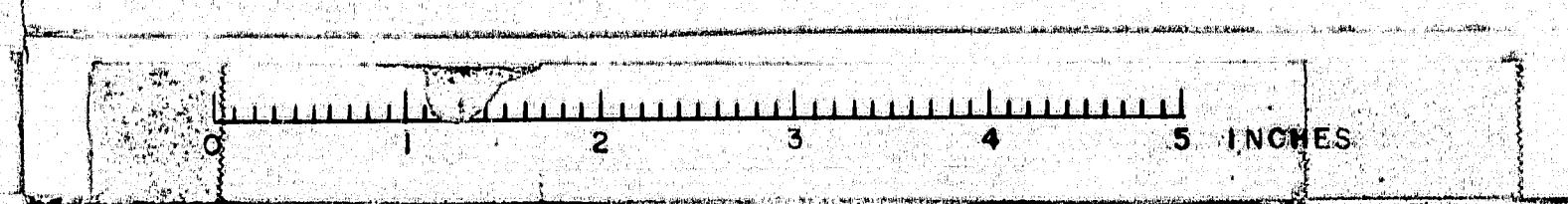
Bancroft & Martin Rolling Mills Company
 Brewer, Maine

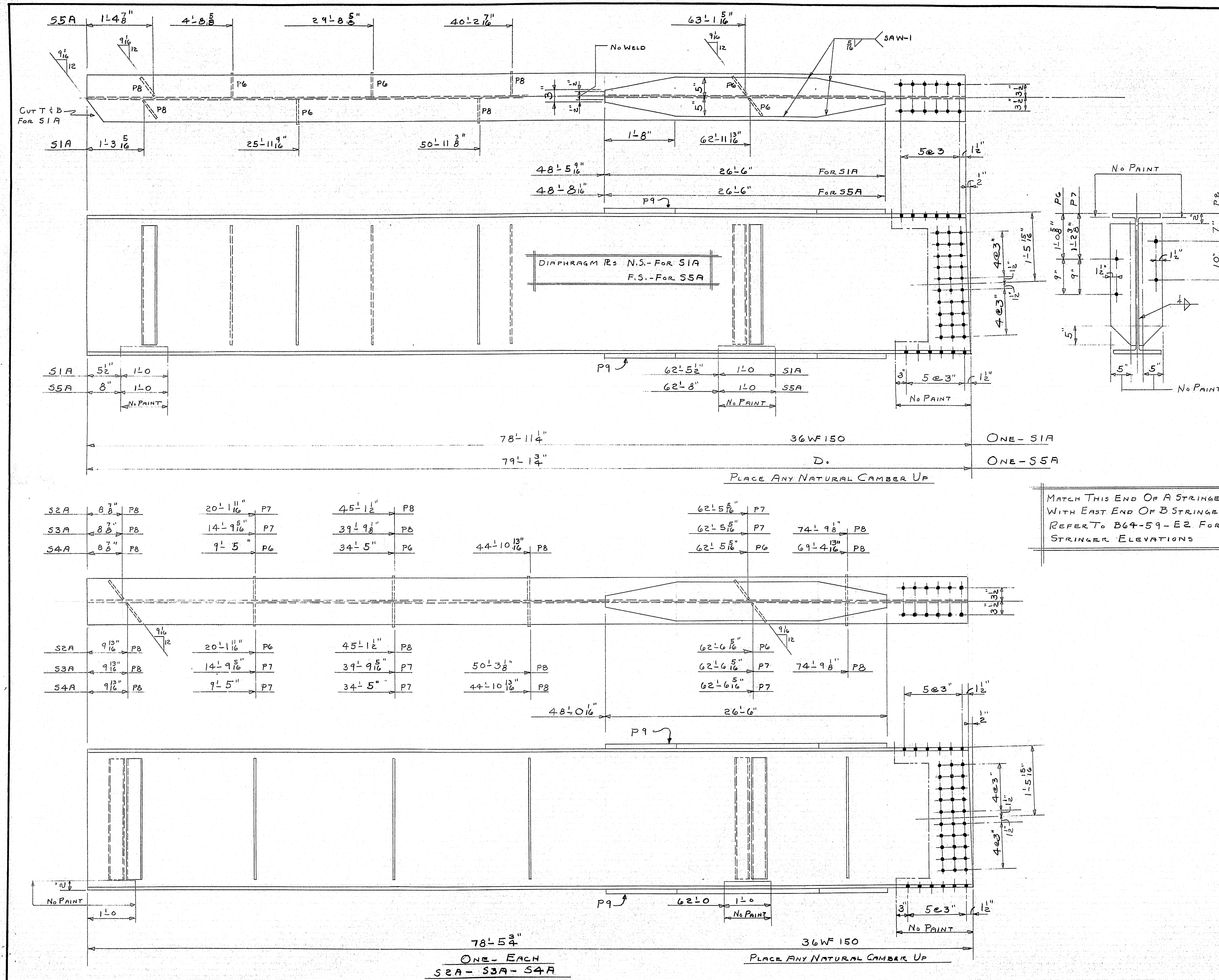
RTE. 16 BRIDGE OVER I-95
 OLD TOWN MAINE

CUSTOMER REED & REED
 DESIGNER STATE HIGHWAY COMM.

ORDER VERBAL DWG. B64-59-E1

95-101

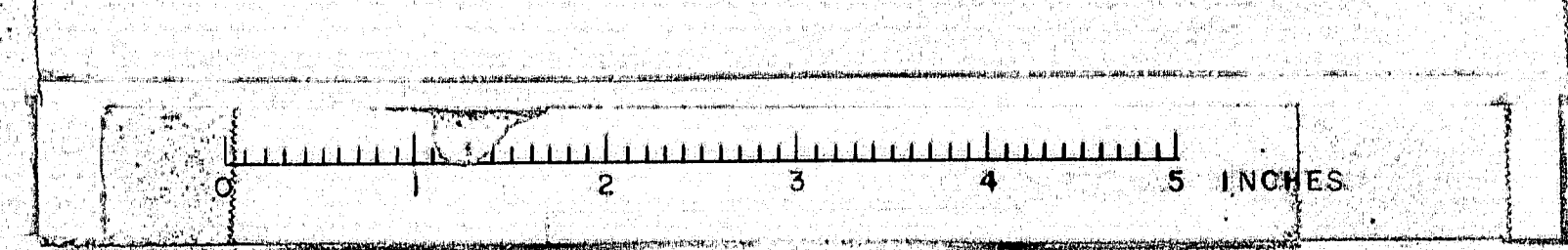


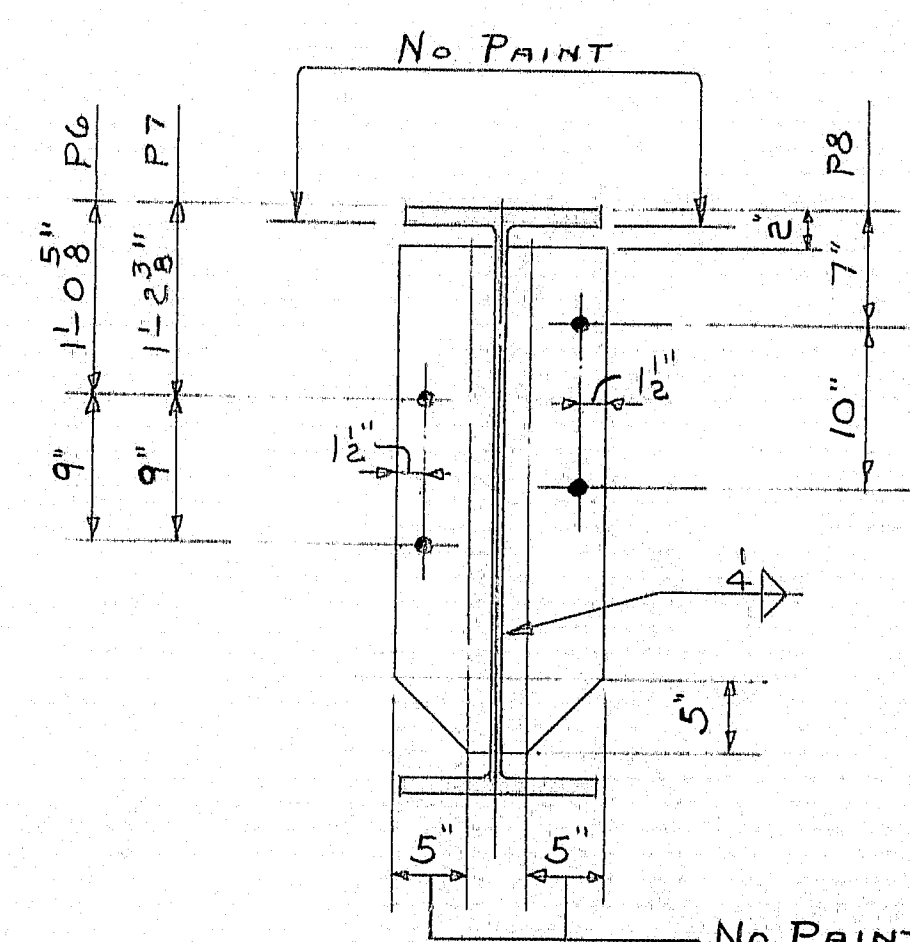


| SHIP | | BILL OF MATERIAL | | | DWG. B64-59-53 | |
|-------|------|------------------|------------------|-------------|----------------|------------------------------------|
| MARK | NO. | MARK | SHAPE | LENGTH | WT. | REMARKS |
| S1A | 1 | | 36WF150 | 78' 11 1/4" | | A36 |
| S2A | 1 | | D. | 78' 5 3/4" | | A36 |
| S3A | 1 | | D. | 78' 5 3/4" | | A36 |
| S4A | 1 | | D. | 78' 5 3/4" | | A36 |
| S5A | 1 | | D. | 79' 1 3/4" | | A36 |
| | 10 | P9 | R 10x1 1/2" | 26' 6" | | A36 |
| | 10 | P6 | R 6x 3/8" | 2' 7" | | A7 OR A36 |
| | 10 | P7 | D. | 2' 7" | | A7 OR A36 |
| | 19 | P8 | D. | 2' 7" | | A7 OR A36 |
| FIELD | 1500 | | 3/8 H.S. BOLT | 0' 3" | | |
| D. | 200 | | D. | 0' 3 1/4" | | HEAVY STRUCT. BOLT & HEAVY NUTS |
| D. | 400 | | D. | 0' 3 1/2" | | |
| D. | 480 | | D. | 0' 3 3/4" | | |
| D. | 2580 | | 3/8 H.S. WASHERS | | | |
| D. | 440 | | 3/4 M. BOLTS | 0' 12" | | FOR DIAPHRAGMS |

SHOP CONNECTIONS: WELD - E70 LOW HYDROGEN
 FIELD CONNECTIONS: DO
 HOLES: 15" Ø
 PAINT: STATE OF MAINE SPEC'S.

| APP'D AS NOTED 6-19-64 | | STRINGERS SPAN A | |
|------------------------|--------------|--|--|
| PRINT ISSUE | | Bancroft & Martin Inc. Brewer, Maine | |
| 5 SHOP | 6-25-64 | RTE. 16 BRIDGE OVER I-95 OLD TOWN MAINE | |
| 2 S.H.C. | 6-25-64 | | |
| 2 S.H.C. | 5-4-64 | | |
| 3 CUST. | 5-4-64 | CUSTOMER READ & RECD DESIGNER STATE HIGHWAY COMM. | |
| 5 SHOP | 5-4-64 | | |
| 2 F.A. | 4-22-64 | ORDER VERBAL DWG. B64-59-53 | |
| DRAWN | 4-10-64 D.C. | | |
| REVISION | | | |
| REVISION | | | |
| REVISION | | | |

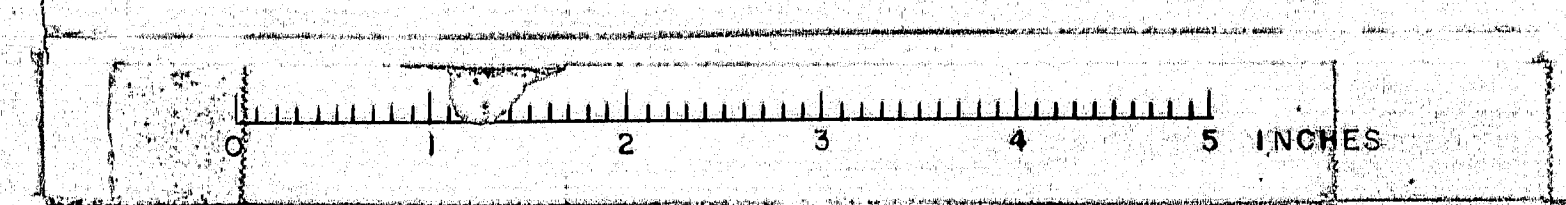


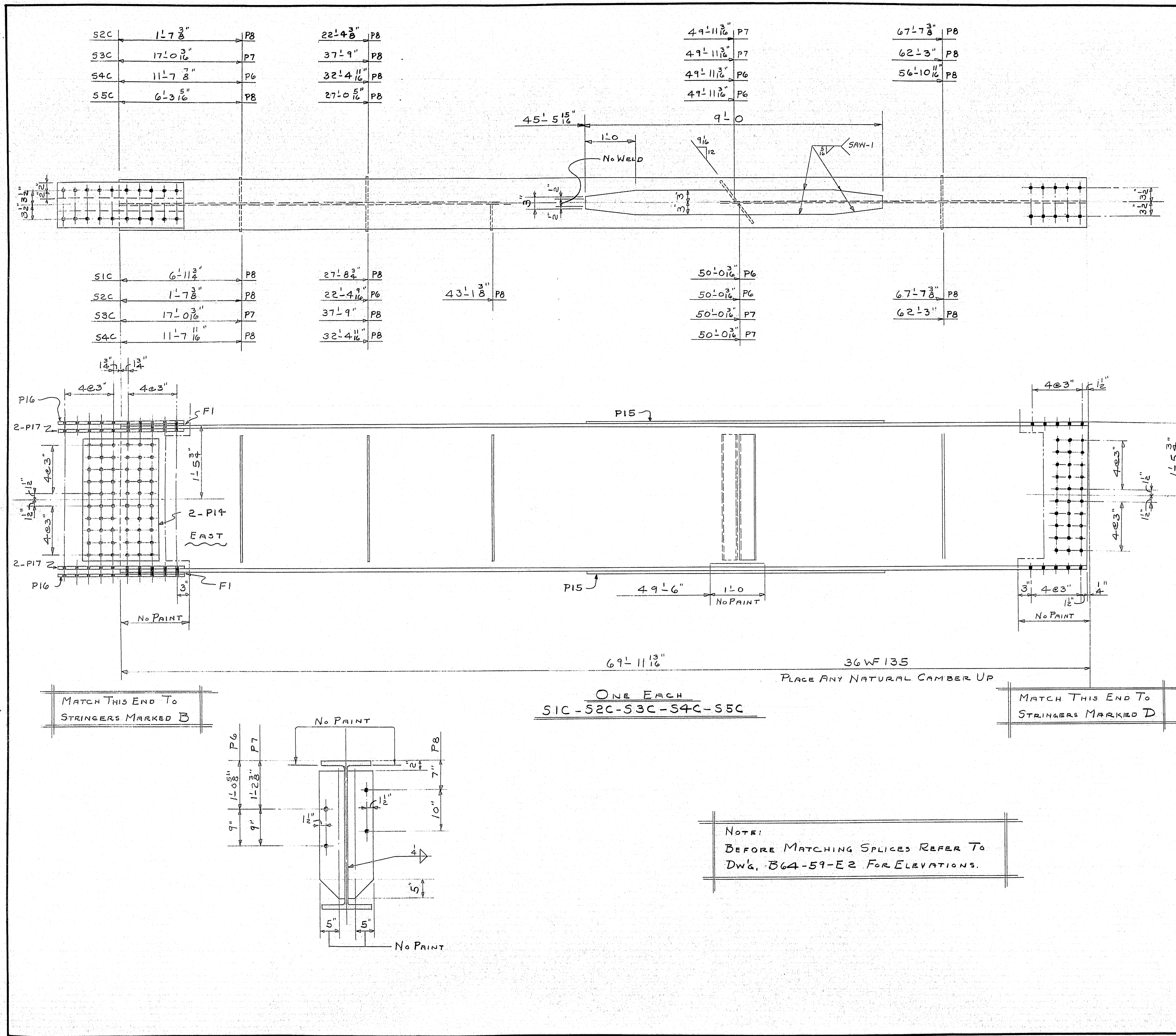


SHOP CONNECTIONS: WELD- E70 LOW-HYDROGEN
ELECTRODES UNLESS NOTED
FIELD CONNECTIONS: Do
HOLES: 1/2" Ø
PAINT: STATE OF MAINE SPEC'S

STRINGERS SPAN E

| | | |
|-------------|----------------|--|
| PRINT ISSUE | | <i>Bancroft & Martin Inc.</i> <i>Brewer, Maine</i> RTA 16 BRIDGE OVER I-95 OLD TOWN MAINE CUSTOMER <u>REED & REED</u> DESIGNER <u>STATE HIGHWAY COMM.</u> ORDER <u>VERBAL</u> DWG. <u>B64-59-S4</u> |
| 5 | SHOP 6-25-64 | |
| 2 | S.H.C. 6-25-64 | |
| 2 | S.H.C. 5-4-64 | |
| 3 | CUST 5-4-64 | |
| 2 | SHOP 5-4-64 | |
| 2 | F.A. 4-22-64 | |
| DRAWN | 4-13-64 D.C. | |
| REVISION | | |
| REVISION | | |
| REVISION | | |





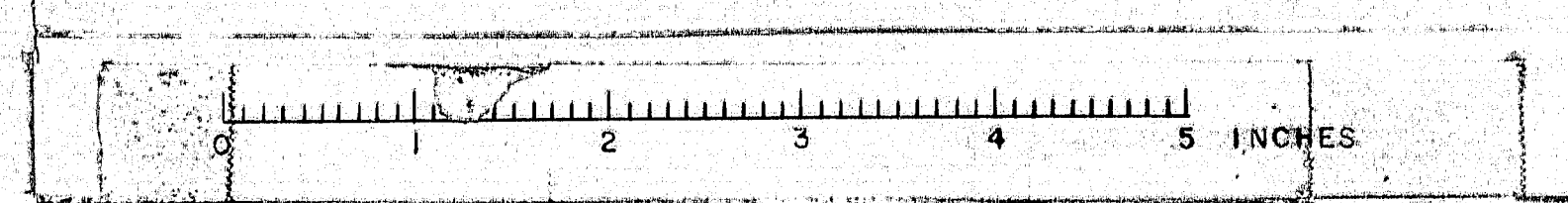
| SHIP | | BILL OF MATERIAL | | | | DWG. B64-59-55 |
|------|-----|------------------|------------|-------------|-----|------------------|
| MARK | NO. | MARK | SHAPE | LENGTH | WT. | REMARKS |
| S1C | 1 | | 36WF135 | 69' 11 1/2" | | A36 |
| S2C | 1 | | D. | 69' 11 1/2" | | A36 |
| S3C | 1 | | D. | 69' 11 1/2" | | A36 |
| S4C | 1 | | D. | 69' 11 1/2" | | A36 |
| S5C | 1 | | D. | 69' 11 1/2" | | A36 |
| | 10 | P15 | R 6 x 3/8 | 9' 0" | | A36 |
| | 10 | P14 | R 18 x 1/2 | 2' 6" | | A36 |
| | 10 | P16 | R 11 x 1/6 | 2' 6 1/2" | | A36 |
| | 20 | P17 | R 4 x 1/6 | 2' 6 1/2" | | A36 |
| | 10 | F1 | R 11 x 1/6 | 1' 3" | | FILLER A7 OR A36 |
| | 6 | P6 | R 6 x 3/8 | 2' 7" | | A7 OR A36 |
| | 6 | P7 | D. | 2' 7" | | A7 OR A36 |
| | 18 | P8 | D. | 2' 7" | | A7 OR A36 |

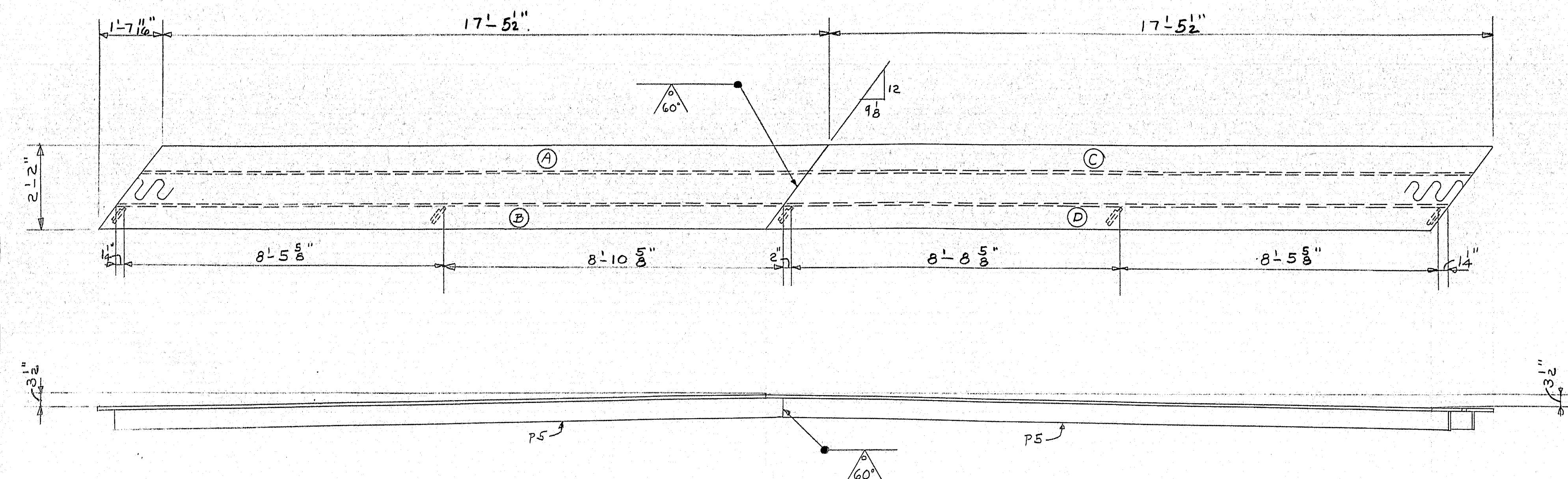
SHOP CONNECTIONS: WELD-ETO LOW-HYDROGEN ELECTRODE UNLESS NOTED
 FIELD CONNECTIONS: D.
 HOLES: 15/16"
 PAINT: STATE OF MAINE SPEC'S.

APPROVED AS NOTED 6-19-69

STRINGERS SPAN C

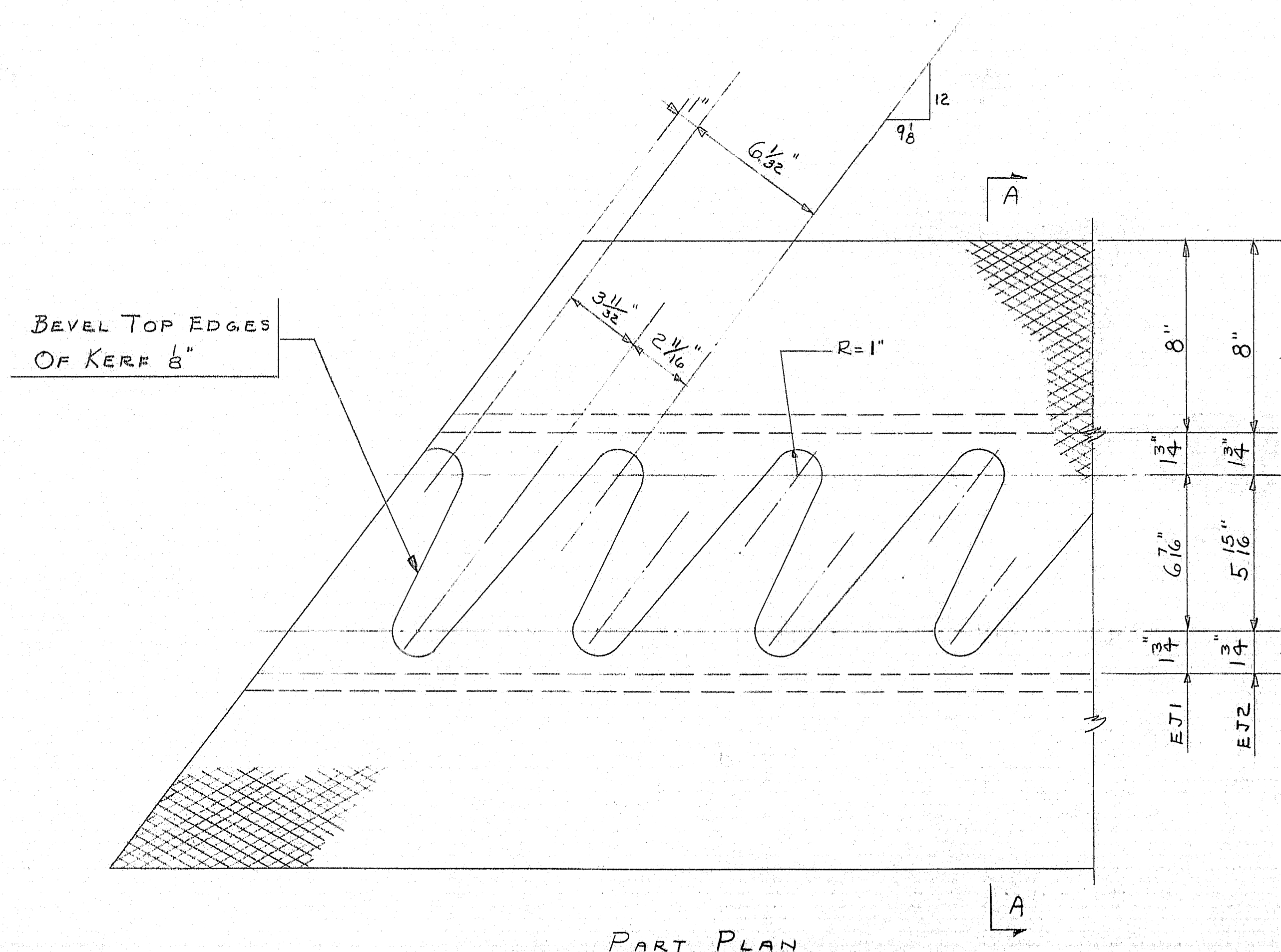
| PRINT ISSUE | | Bancroft & Martin Inc. | |
|-------------|--------------|------------------------------|----------------|
| 5 SHOP | 6-25-64 | Brewer, Maine | |
| 2 S.H.C. | 6-25-64 | | |
| 2 S.H.C. | 5-4-64 | | |
| 3 C.V.T. | 5-4-64 | | |
| 5 SHOP | 5-4-64 | | |
| 2 F.A. | 4-22-64 | | |
| DRAWN | 4-13-64 D.C. | | |
| REVISION | | | |
| REVISION | | | |
| REVISION | | | |
| | | CUSTOMER REED & REED | |
| | | DESIGNER STATE HIGHWAY COMM. | |
| | | ORDER VERBAL | DWG. B64-59-55 |



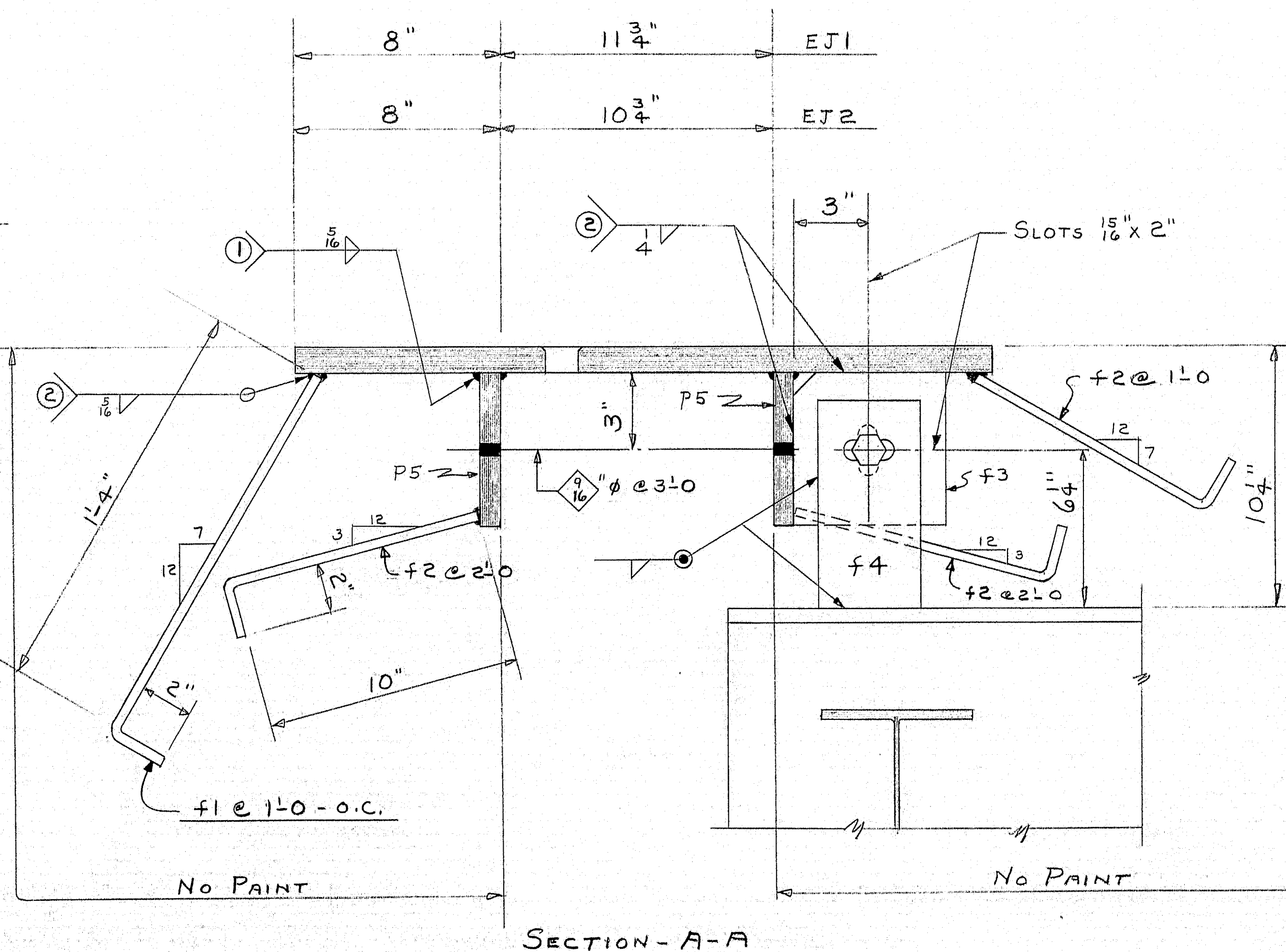


ONE EJ1 @ ABUT #1
ONE EJ2 @ ABUT #2

NOTE
WELDS MARKED ① USE SAWH
WELDS MARKED ② USE E70 ELECTRODE & PREHEAT TO 200°F
OR USE E70 LOW HYDROGEN ELECTRODE



PART PLAN



SECTION-A-A

| SHIP | | BILL OF MATERIAL | | | | DWG. B64-59-59 |
|------|-----|------------------|-------------------|--------|-------|----------------|
| MARK | NO. | MARK | SHAPE | LENGTH | WT. | REMARKS |
| EJ1A | 1 | | UNIT | | | |
| EJ1B | 1 | | D. | | | |
| EJ1C | 1 | | D. | | | |
| EJ1D | 1 | | D. | | | |
| EJ2A | 1 | | D. | | | |
| EJ2B | 1 | | D. | | | |
| EJ2C | 1 | | D. | | | |
| EJ2D | 1 | | D. | | | |
| | 2 | | PE 26x1 | 36 | 6 1/6 | CHK'D FB. |
| | 8 | P5 | PE 6x3 | 17 | 6 | |
| | 64 | f1 | BAR 2x3 | 1 | 6 | |
| | 136 | f2 | D. | 1 | 0 | |
| | 10 | f3 | PE 6x3 | 0 | 6 | |
| | 10 | f4 | BAR 4x3 | 0 | 84 | |
| | 10 | SHOP | 1/2 H.S. B.L.T. | 0 | 24 | |
| | 10 | D. | 1/2 H.S. WASHERS. | | | |

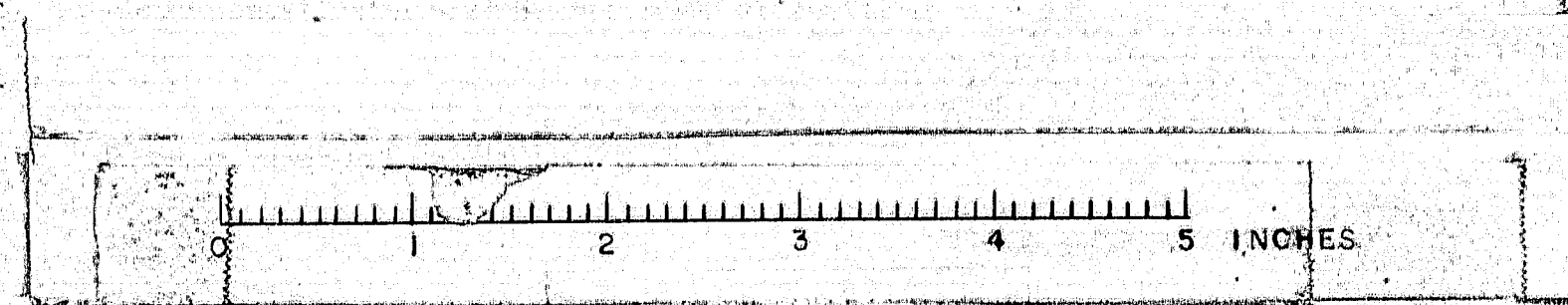
SHOP CONNECTIONS: WELD E70-LOW HYDROGEN
FIELD CONNECTIONS: WELD
HOLES: AS NOTED
PAINT: STATE OF MAINE SPEC'S.

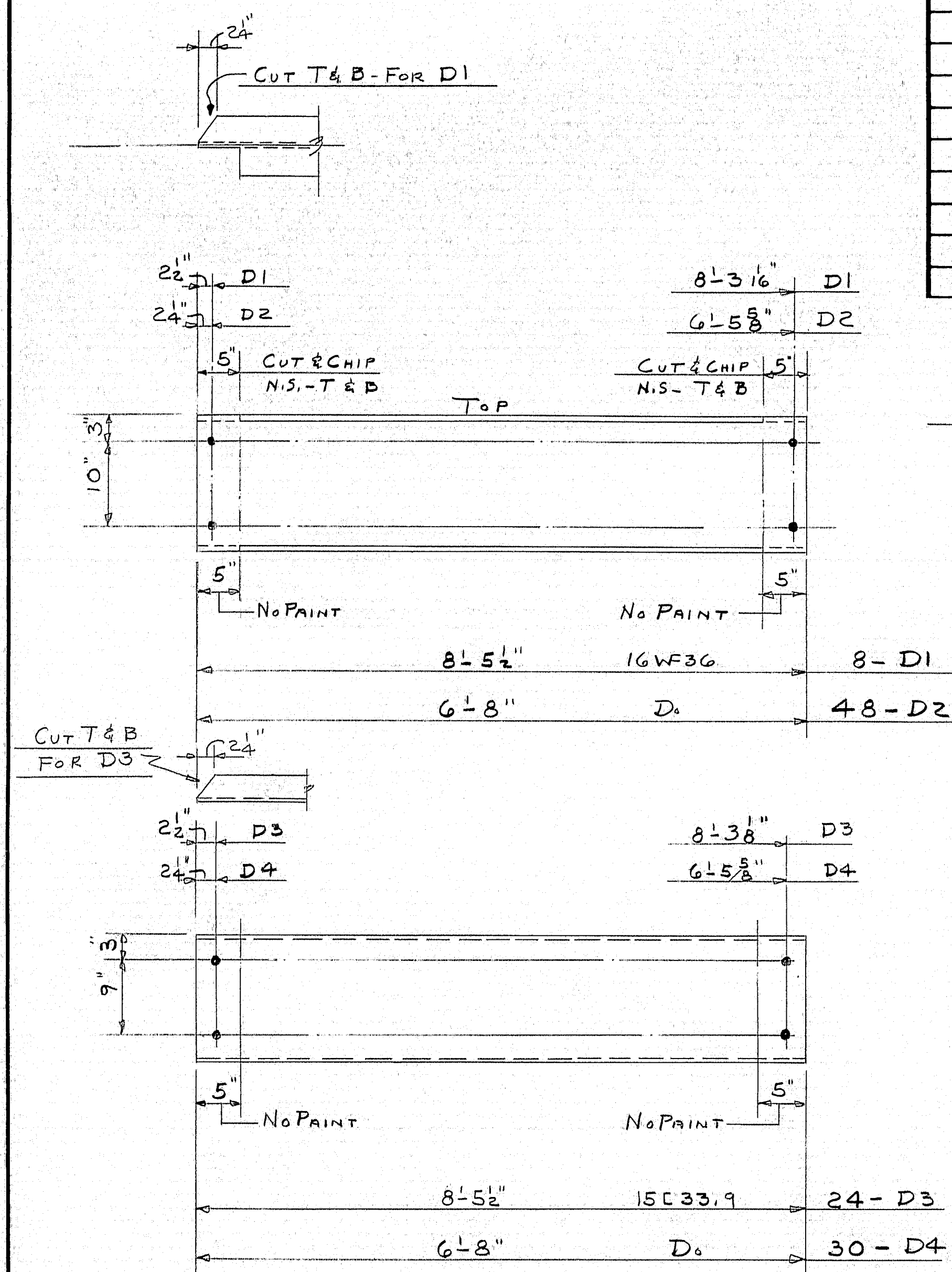
APP'D AS NOTED 4/13/64

EXPANSION JOINTS (BRIDGE DECK)

| PRINT ISSUE | | |
|-------------|--------|---------|
| 2 | S.H.C. | 6-25-64 |
| 2 | S.H.C. | 5-4-64 |
| 3 | CUST. | 5-4-64 |
| 5 | SHOP | 4-14-64 |
| 2 | F.A. | 4-9-64 |
| DRAWN | 4-8-64 | DL. |
| REVISION | | |
| REVISION | | |
| REVISION | | |

Bancroft & Martin Inc.
Brewer, Maine
RTE. 16 BRIDGE OVER I-95
OLD TOWN MAINE
CUSTOMER: REED & REED
DESIGNER: STATE HIGHWAY COMM.
ORDER VERBAL DWG. B64-59-59



[illegible]

SHOP CONNECTIONS:
FIELD CONNECTIONS:
HOLES: $1\frac{5}{16}'' \phi$
PAINT: STATE OF MAINE SPEC'S,

| DIAPHRAGMS | | | |
|--------------------|--------|---------|---|
| PRINT ISSUE | | | |
| 2 | S.H.C. | 6-25-64 | <i>Bancroft & Martin Rolling Mills Company</i> <i>Brewer, Maine</i> RTE 16 BRIDGE OVER I-95 OLD TOWN MAINE |
| 2 | S.H.C. | 5-9-64 | |
| 3 | CUST. | 5-4-64 | |
| 5 | S.H.P. | 5-4-64 | |
| 2 | F.A. | 4-22-64 | |
| DRAWN 4-15-64 D.C. | | | CUSTOMER <u>REED & REED</u> DESIGNER <u>STATE HIGHWAY COMM.</u> |
| REVISION | | | |
| REVISION | | | ORDER <u>VERBAL</u> DWG. <u>B64-59-511</u> |
| REVISION | | | |

95-113

